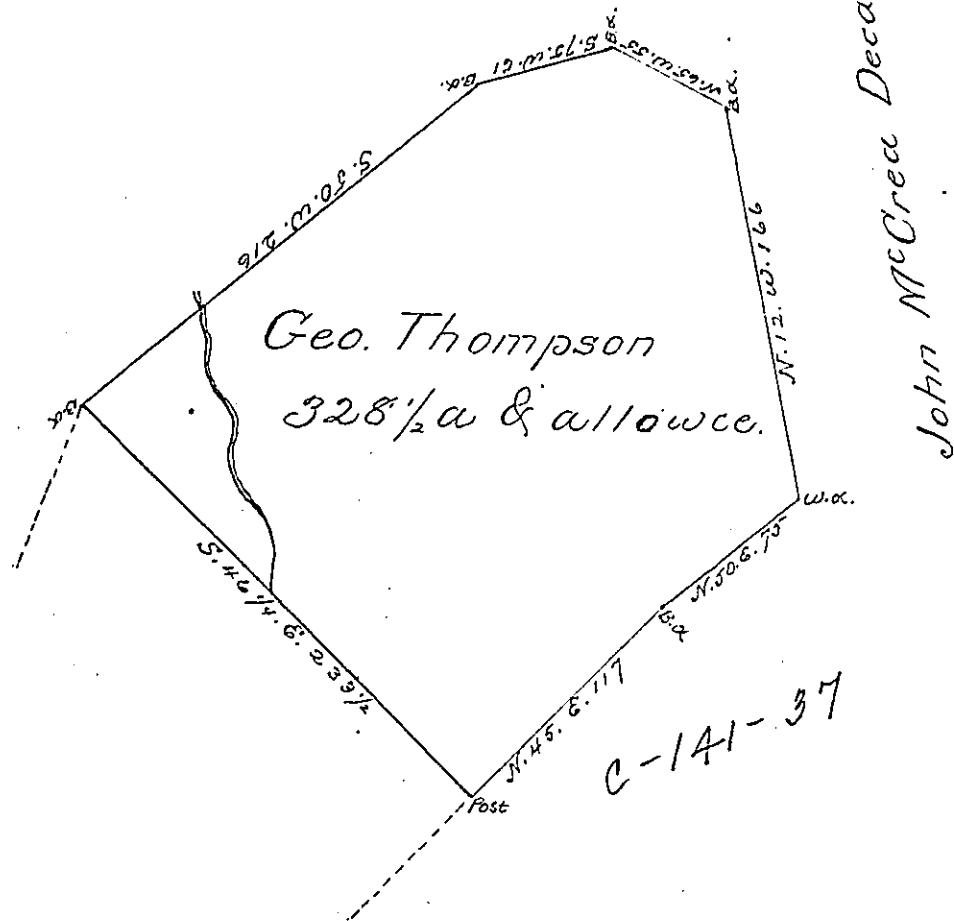


George Campbell Decd.



Surveyd to George Thompson on the 8th day of September 1785 the above described Tract of three hundred & twenty eight acres & an half acre, & allowance of Six pCent. Situate on the waters of Two lick creek, adjoining lands late John McCrea decd. & George Campbell decd. in Armstrong Township Westmoreland County. By warrant of the 1st. day of July 1785

Joshua Elder D.S.  
John Lukens Esqr. S. Genl.

IN TESTIMONY that the above is a copy of the original remaining on file in the Department of Internal Affairs of Pennsylvania, made conformably to an Act of Assembly approved the 16th day of February, 1833, I have hereunto set my Hand and caused the Seal of said Department to be affixed at Harrisburg, this third day of July 1900

*James W. Latta*  
Secretary of Internal Affairs.